

STATE OF LOUISIANA
 LA 117 17
 Bond Proj. 1201

STATE OF LOUISIANA
LOUISIANA HIGHWAY COMMISSION
 PLAN AND PROFILE OF PROPOSED
BAYOU MANCHAC BRIDGE
 AT
HOPE VILLA

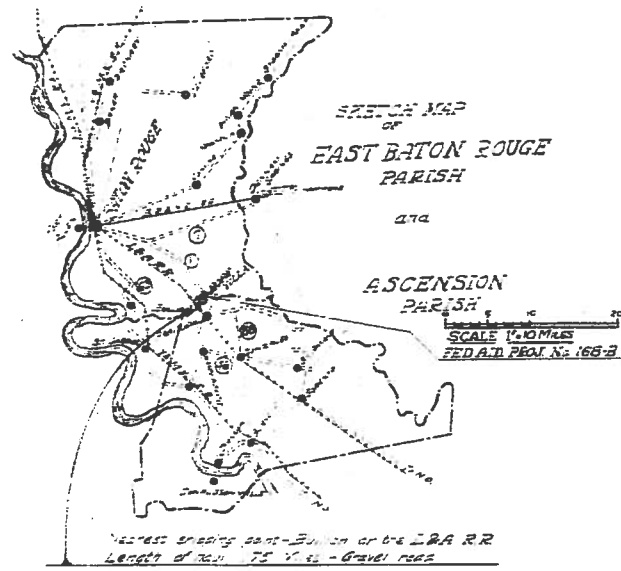
BATON ROUGE-NEW ORLEANS AIRLINE HIGHWAY
EAST BATON ROUGE & ASCENSION PARISHES

FED. AID. PROJ. No. 168-B
 STATE BOND PROJ. 1201

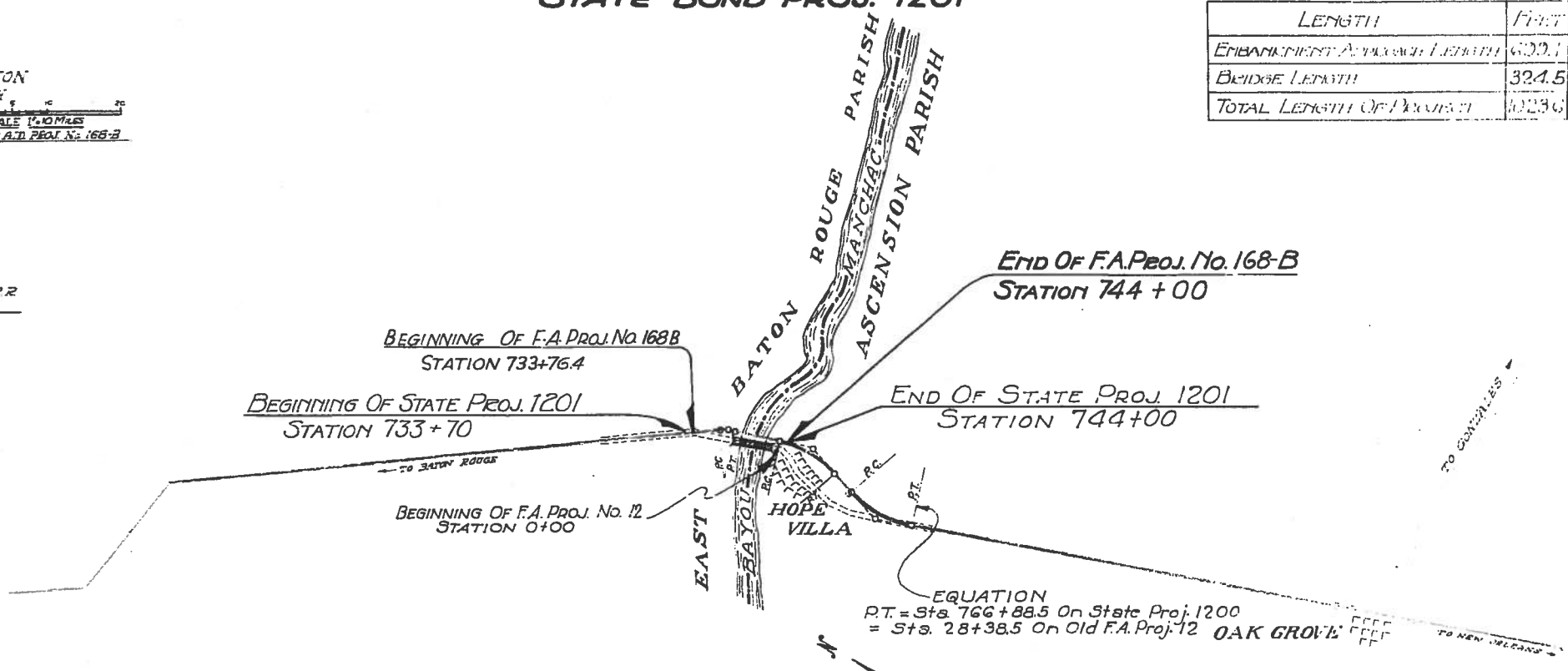
LENGTH OF F.A. PROJECT No. 168-B

LENGTH	FEET	MILES
EMBANKMENT APPROXIMATE LENGTH	600.7	0.1327
BRIDGE LENGTH	324.5	0.0614
TOTAL LENGTH OF PROJECT	925.2	0.1941

- INDEX TO SHEETS**
- Title Page and Layout Map
 - Surveyed Forces & Limits Sta
 - Plan Cross Section at Department 8-27
 - General Plan
 - Profile
 - Plan No. 144
 - Plan No. 243
 - Map of Land '18
 - 1912 Bottom Section
 - 50' Low Water Sta. Plan-3-2-27
 - Section Details
 - Project Markers Sta. Plan 3-2-27
 - Approximate Section Plan 3-2-27
 - Cross Section
 - Cross Section
 - Summary of Details
 - Right of Way Markers Sta. Plan 3-2-27



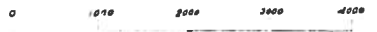
LAYOUT MAP ONLY
 SURVEYED BY
 FACILITY
 ENGINEER



Datum Used - Mean Gulf Level

LAYOUT MAP

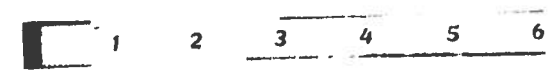
SCALE: 1 INCH = 1000 FEET



- CONVENTIONAL SIGNS**
- Base Line
 - Grade Line
 - Ground Line
 - Right of Way
 - Traveled Roadway
 - Fence
 - Levee
 - Canals
 - Railroads
 - Property Lines
 - Section & Grant Lines
 - Township & Range Lines
 - Ward & Road Dist. Boundary Lines
 - Parish & State Boundary Lines
 - Topographic & Telegraph Lines
 - Boundary Lines General
 - Misc. Posts at end of mile

APPROVED: *[Signature]*
 District Engineer, 11-25-29
 APPROVED:
 RECOMMENDED FOR APPROVAL:
 District Engineer, 1st Federal Aid District
 RECOMMENDED FOR APPROVAL:
 Civil Engineer Bureau of Public Roads
 APPROVED:
 District Bureau of Public Roads

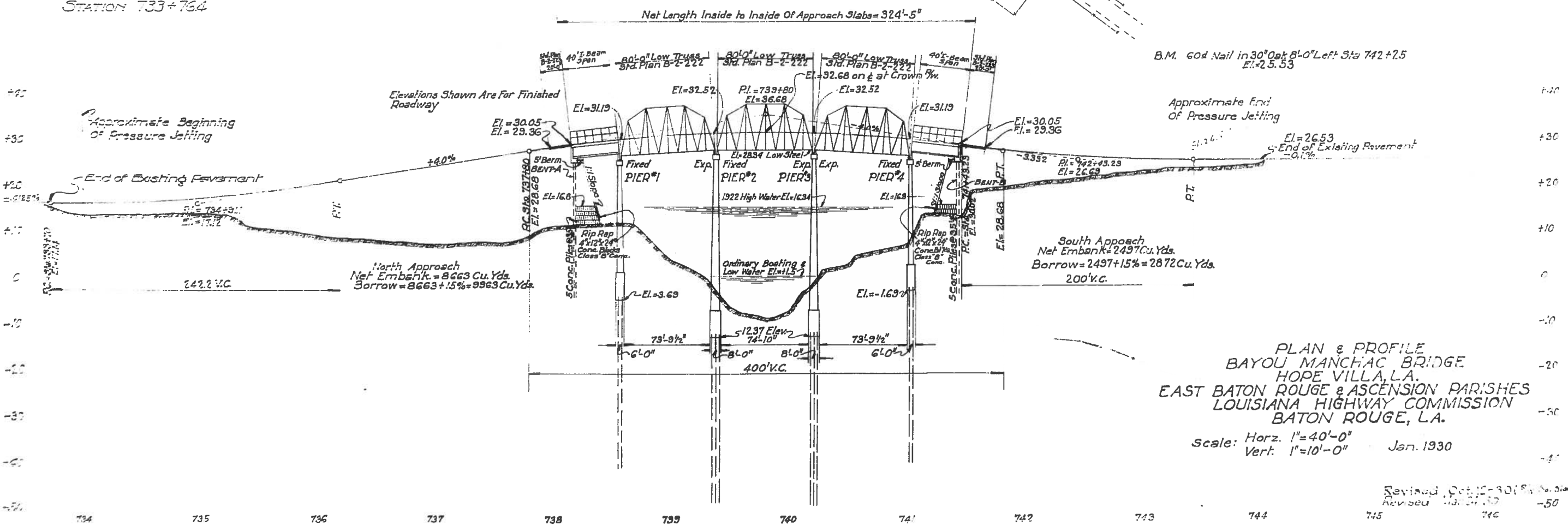
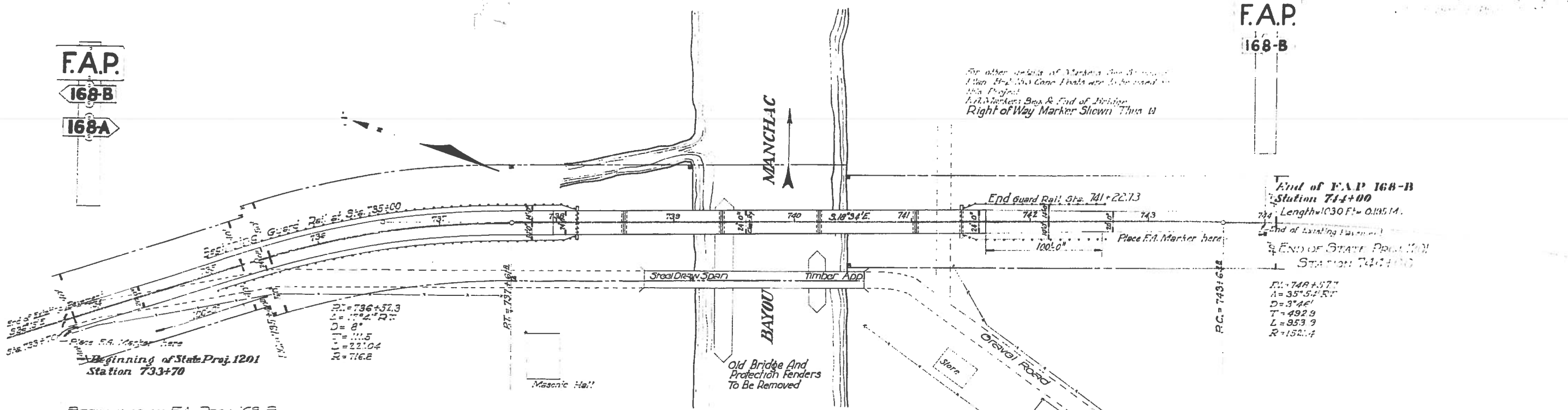
FINAL TRACINGS



4

F.A.P.
168-B
168-A

F.A.P.
168-B



PLAN & PROFILE
 BAYOU MANCHAC BRIDGE
 HOPE VILLA, LA.
 EAST BATON ROUGE & ASCENSION PARISHES
 LOUISIANA HIGHWAY COMMISSION
 BATON ROUGE, LA.

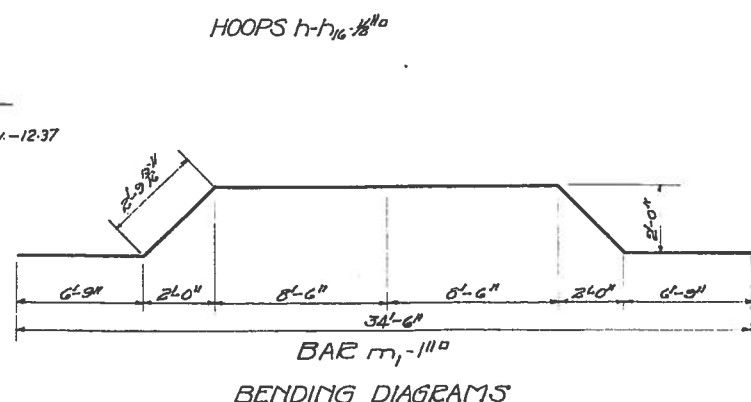
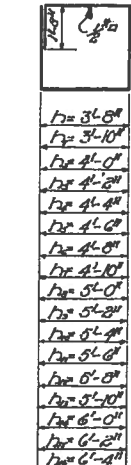
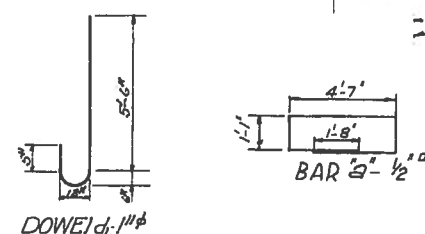
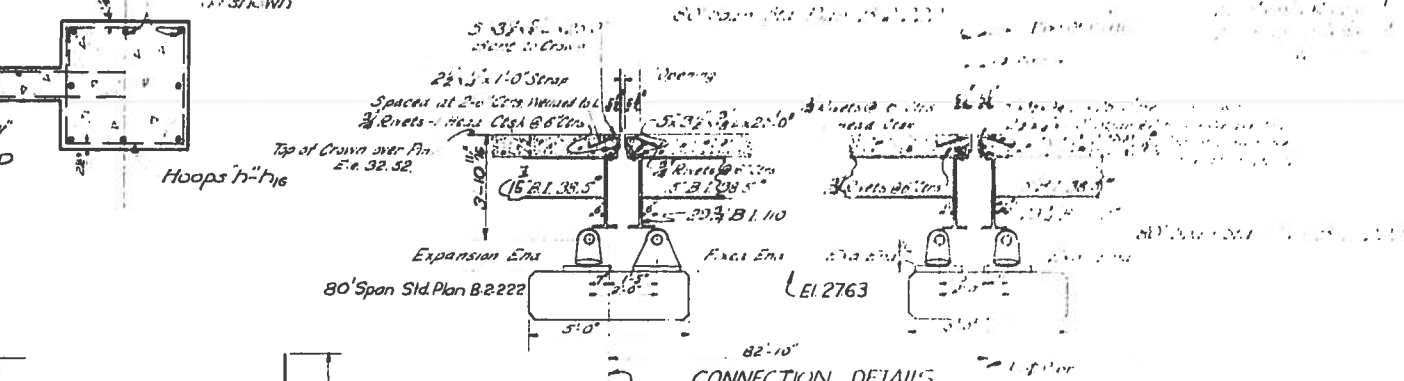
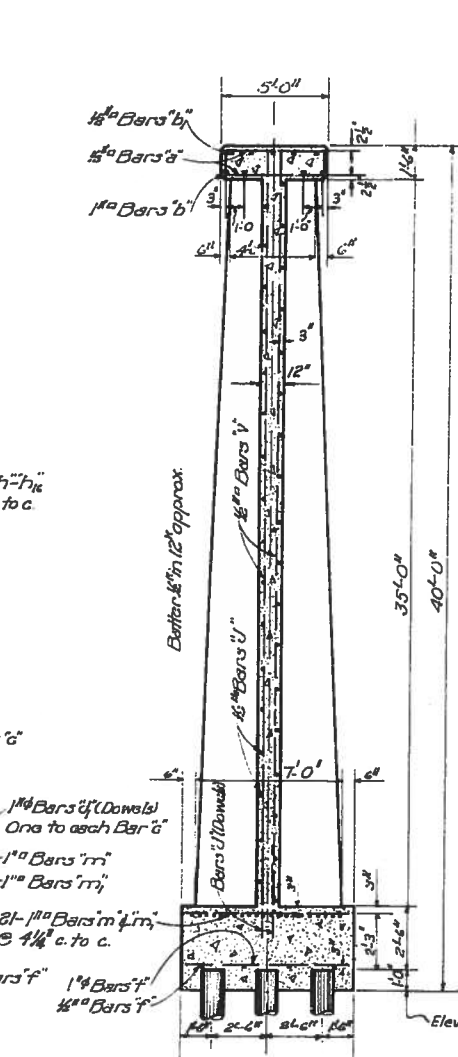
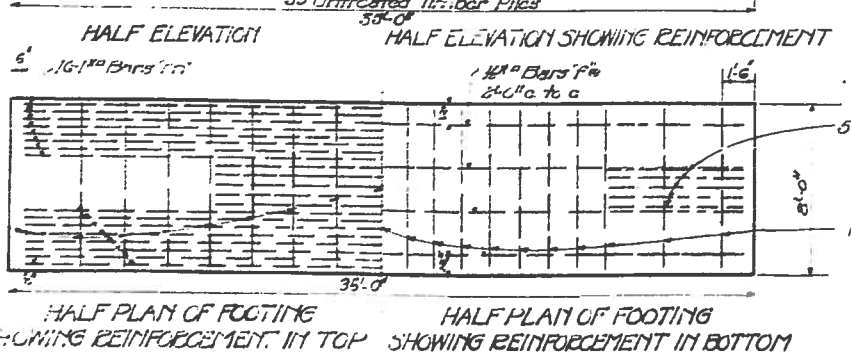
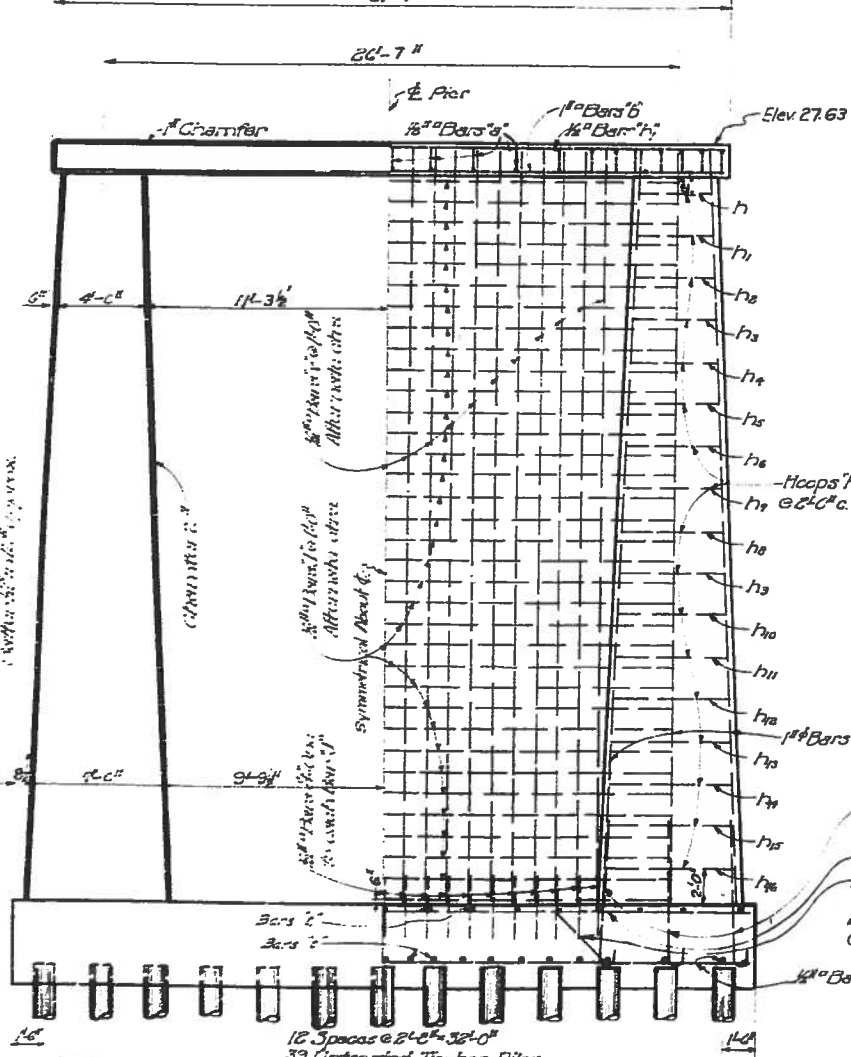
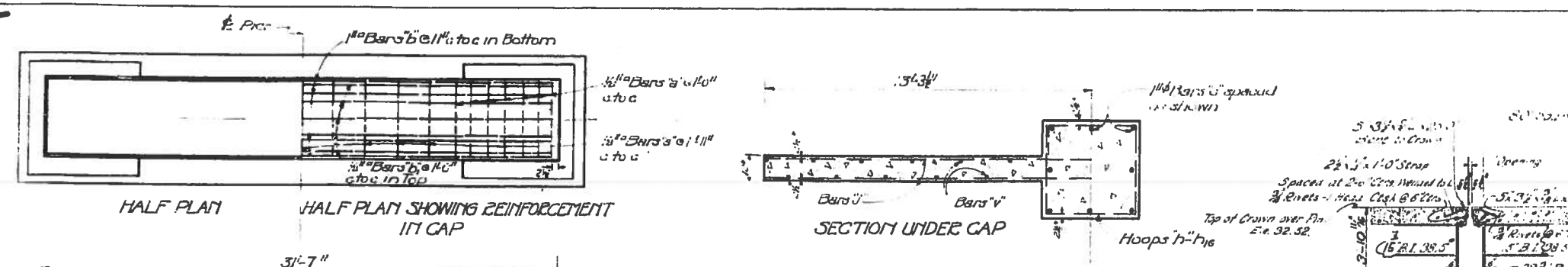
Scale: Horz. 1" = 40'-0"
 Vert. 1" = 10'-0" Jan. 1930

Revised Oct. 1930
 Revised March 1931

FINAL TRACINGS



5



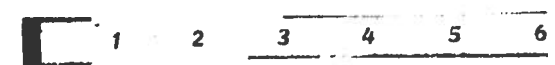
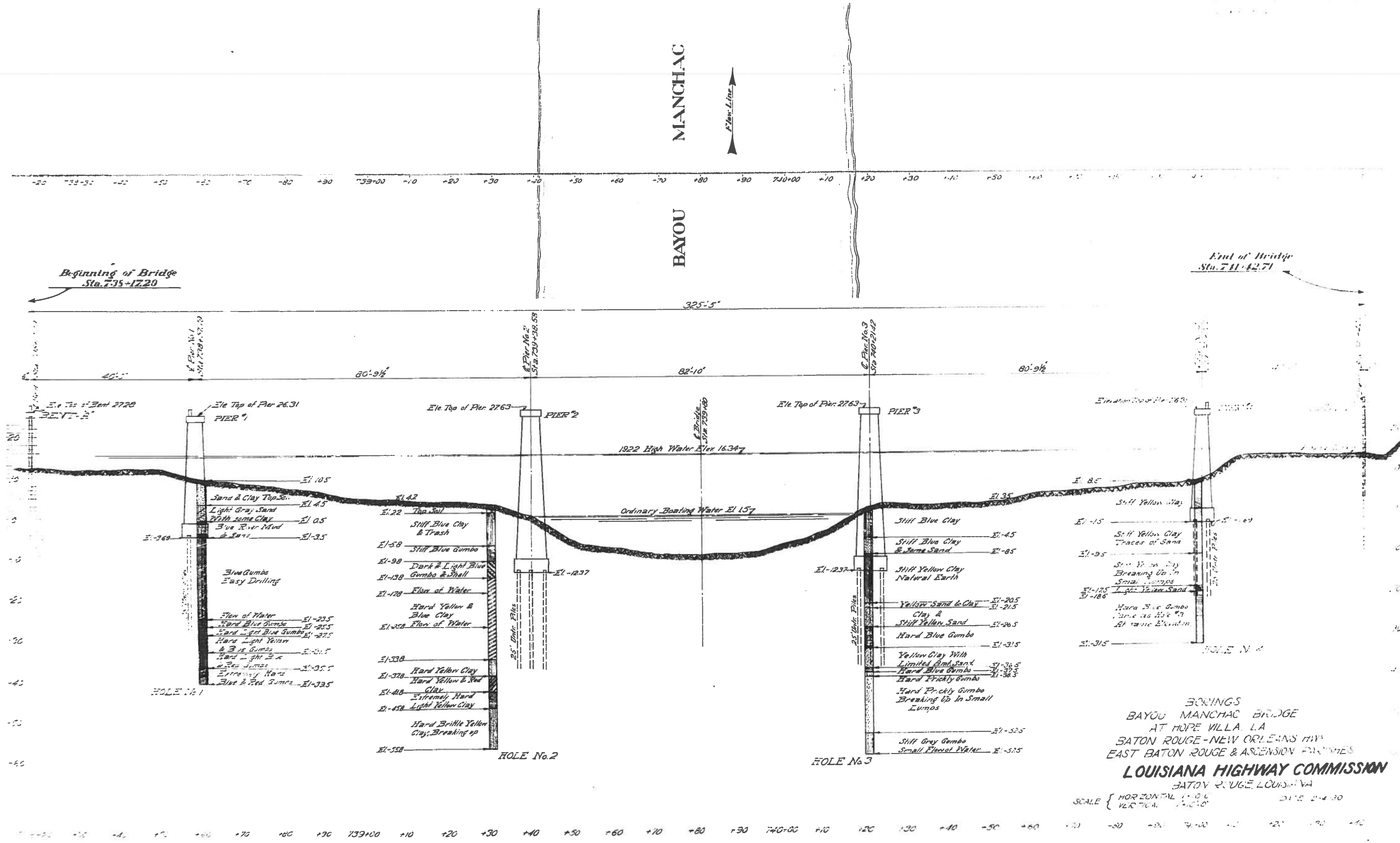
GENERAL NOTES

Specifications: Louisiana Highway Commission's February 1939 to govern.
 Footing Courses to be placed Monolithic.
 Dimensions shown to Reinforcing Steel are to Bar centers.
 Exposed surfaces to have "Rubbed Finish".
 Chamfer exposed Corners 2" unless otherwise indicated.
 These Piers Are Designed For Possible Future Conversion Of Center Span Into A Lift Span.

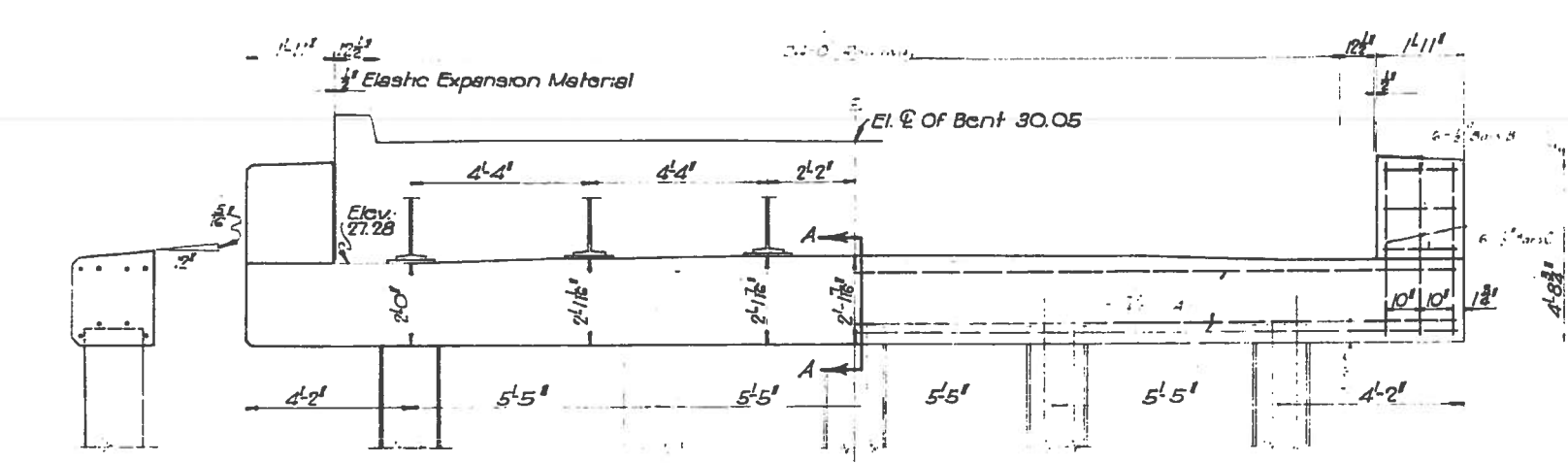
BILL OF MATERIALS						
BAR	SIZE	NO.	LENGTH	TOTAL LENGTH	WEIGHT	LOCATION
a	1/2"	23	13'-0"	299'-0"		Horizontal in Bottom of Cap
b	1/2"	5	31'-2"	155'-10"		Horizontal in Bottom of Cap
c	1/2"	21	31'-2"	704'-0"		Vertical in Columns
d	1/2"	4	34'-6"	138'-0"		Horizontal in Bottom of Cap
e	1/2"	2	1'-0"	3'-0"		Vertical in Columns
f	1/2"	2	1'-0"	3'-0"		Vertical in Columns
g	1/2"	2	1'-0"	3'-0"		Vertical in Columns
h	1/2"	2	1'-0"	3'-0"		Vertical in Columns
i	1/2"	2	1'-0"	3'-0"		Vertical in Columns
j	1/2"	2	1'-0"	3'-0"		Vertical in Columns
k	1/2"	2	1'-0"	3'-0"		Vertical in Columns
l	1/2"	2	1'-0"	3'-0"		Vertical in Columns
m	1/2"	2	1'-0"	3'-0"		Vertical in Columns
n	1/2"	2	1'-0"	3'-0"		Vertical in Columns
o	1/2"	2	1'-0"	3'-0"		Vertical in Columns
p	1/2"	2	1'-0"	3'-0"		Vertical in Columns
q	1/2"	2	1'-0"	3'-0"		Vertical in Columns
r	1/2"	2	1'-0"	3'-0"		Vertical in Columns
s	1/2"	2	1'-0"	3'-0"		Vertical in Columns
t	1/2"	2	1'-0"	3'-0"		Vertical in Columns
u	1/2"	2	1'-0"	3'-0"		Vertical in Columns
v	1/2"	2	1'-0"	3'-0"		Vertical in Columns
Total 1/2" Bars 3218'-2736 Lbs.						
b	1/2"	4	31'-2"	124'-8"		Horizontal in Bottom of Cap
m	1/2"	16	30'-0"	480'-0"		Horizontal in Bottom of Cap
n	1/2"	5	30'-0"	180'-0"		Horizontal in Bottom of Cap
Total 1/2" Bars 785'-6" = 2271 Lbs.						
Structural Steel in Connection 1407 Lbs.						
Total Class A Concrete 15207 Cu Yds.						
Total Reinforcing Steel 7697 Lbs.						
Total Untreated Timber 111 cu yds @ 25' = 975 Lbs.						
Lengths of Piling above are for Estimating Purposes Only						
Structural Excav 190 Cu Yds Pier No. 3						
Structural Excav 217 Cu Yds Pier No. 3						

DETAILS OF PIER No. 2 or 3
 BAYOU MANCHAC BRIDGE
 BATON ROUGE-NEW ORLEANS HIGHWAY
 EAST BATON ROUGE-ASCENSION PARISHES
 LOUISIANA HIGHWAY COMMISSION
 Baton Rouge, La
 Scale 1/4" = 1'-0"
 Sept 1929

6

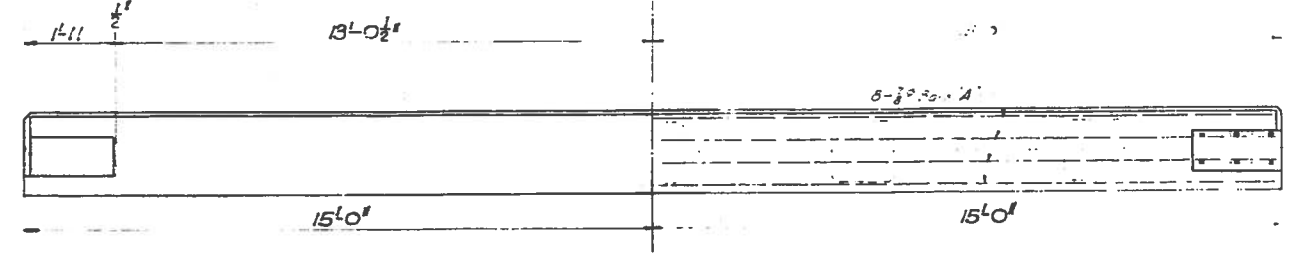


8



SEC A-A

ELEVATION

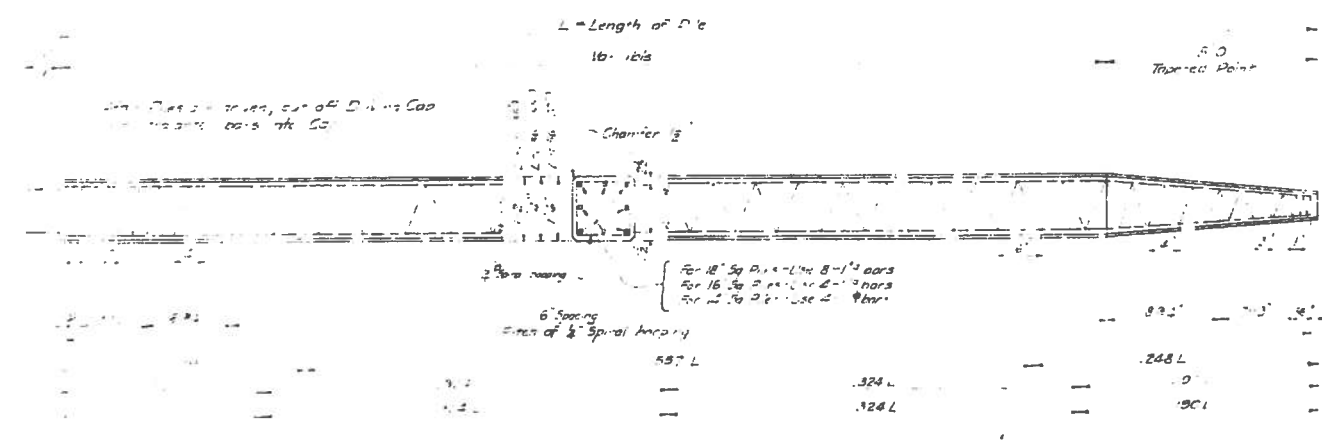


PLAN

Beginning of Bridge 2

BILLS OF MATERIAL FOR ONE BENT ONLY

1	8	20	0
4	5	59	0
		73	0
			62
			54
			700

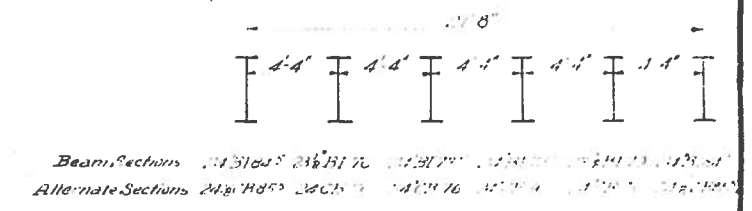
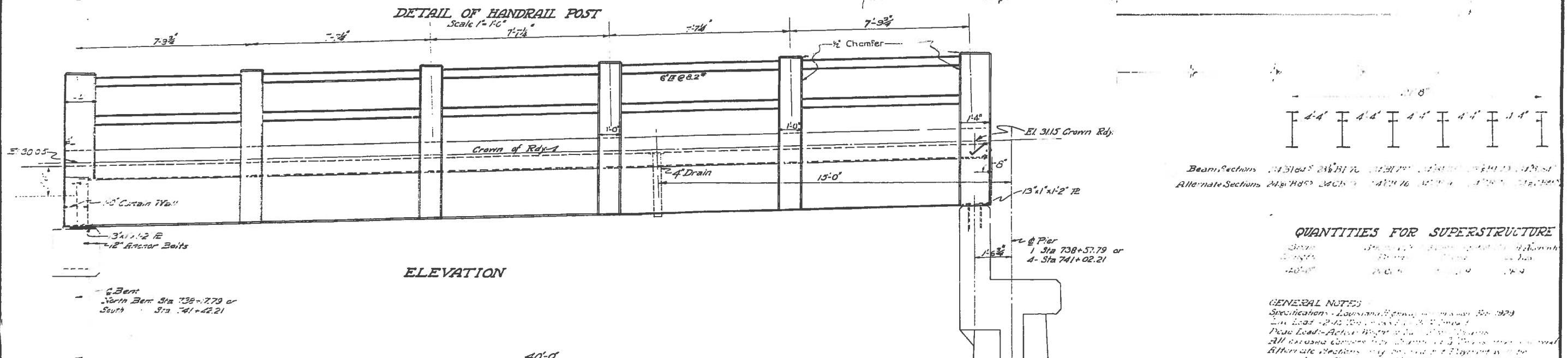
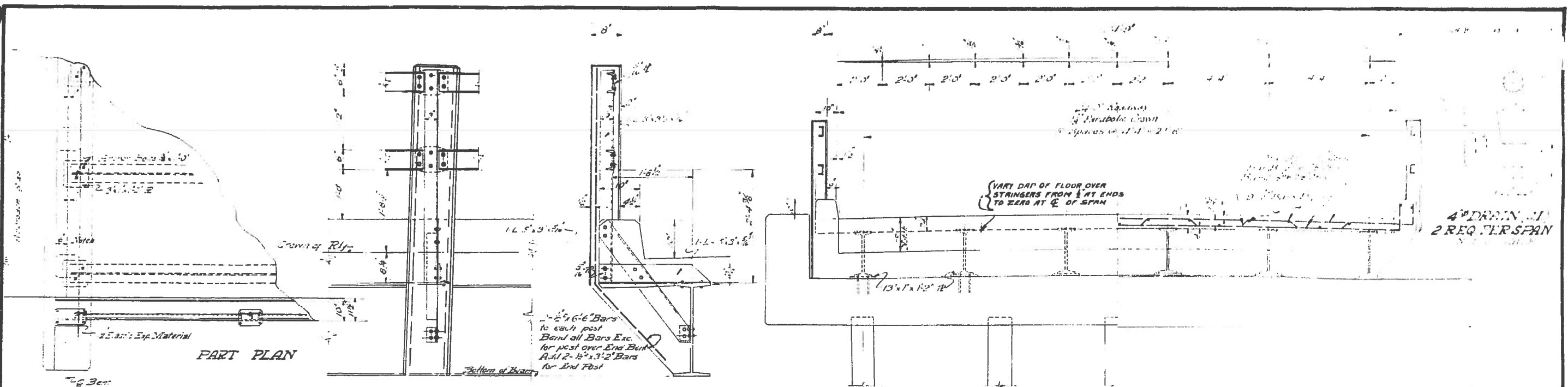


APPROXIMATE QUANTITIES -- FOR PILES

Pile Lengths	Driving Cap Tons	Variable Pile Lbs	Tip of Point	Tip of Point	Tip of Point
15 - 35	0.31	36	75	12	170
36 - 55	0.31	38	70	5	200
56 - 70	0.31	38	65	3	250

BENTS A & B
 BAYOU MANCHAC BRIDGE
 HOPE VILLA, LA
 LOUISIANA HIGHWAY COMMISSION

9

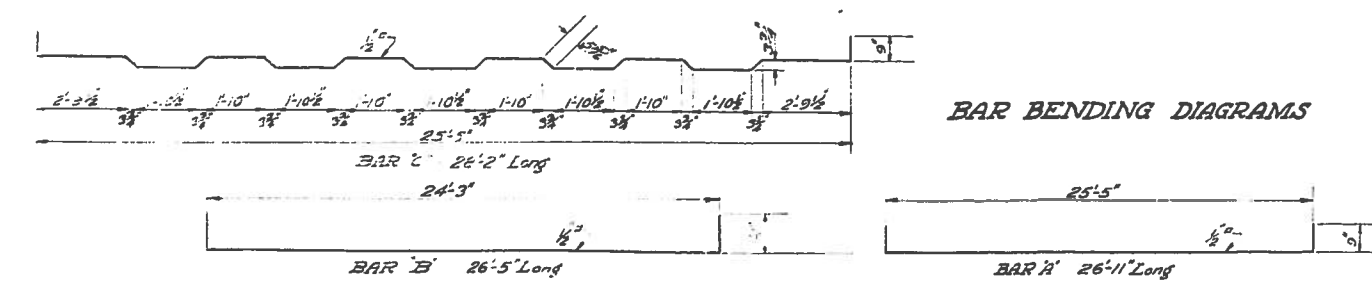


QUANTITIES FOR SUPERSTRUCTURE

Span	1
Length	40'-0"
Area	1600'-0"

GENERAL NOTES

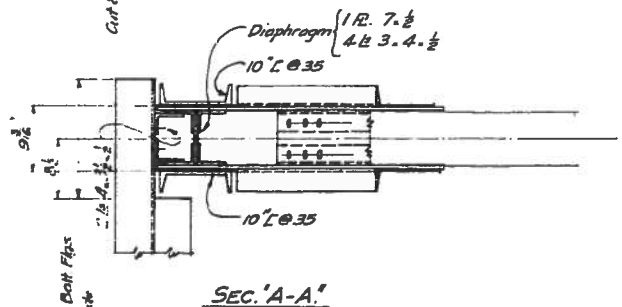
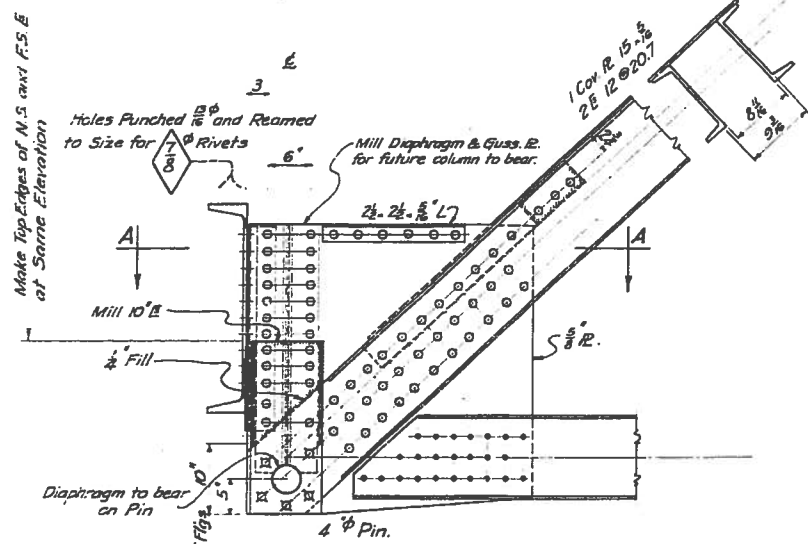
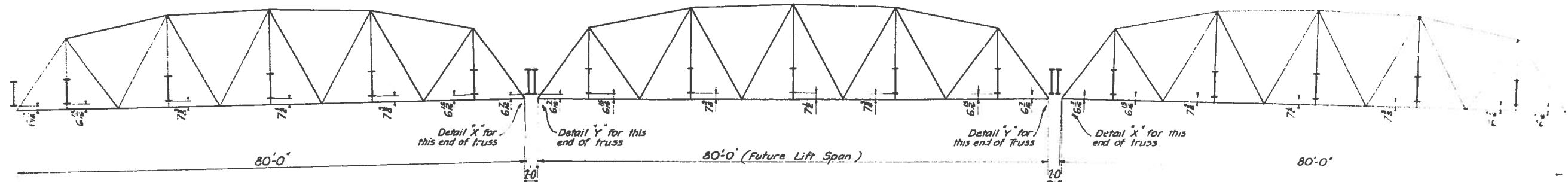
Specifications - Louisiana Highway Commission, 1939
 Live Load - 2-45 Tons
 Dead Load - Actual Weight of Structure
 All Louisiana Commission Specifications apply
 Alternate Sections may be used if approved in writing
 made on basis of section shown in the related
 Beam Sections



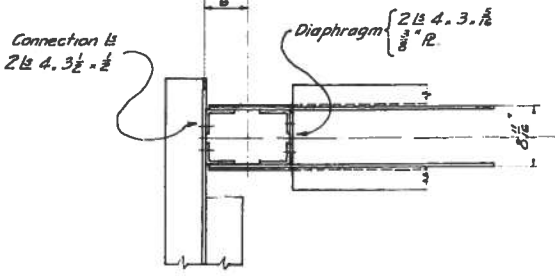
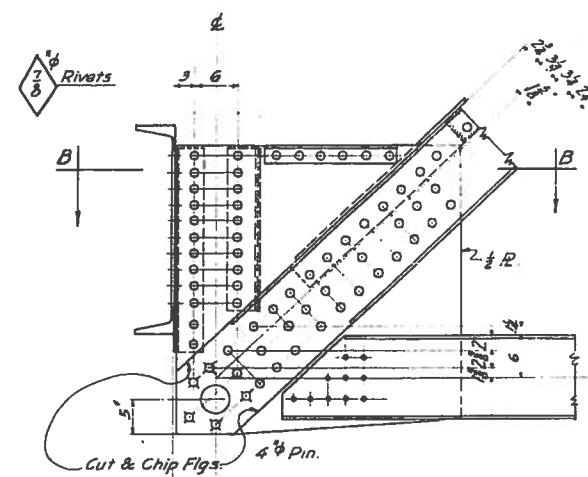
**DETAILS OF 40'-0\"/>
 BAYOU MANCHAC BRIDGE
 BATON ROUGE - NEW ORLEANS HIGHWAY
 EAST BATON ROUGE - ASCENSION PARISHES
LOUISIANA HIGHWAY COMMISSION
 BATON ROUGE, LA**

Scale 1/4" = 1'-0" No. 930

10



DETAIL "X"



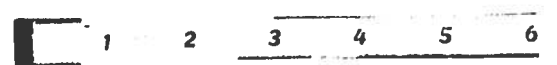
DETAIL "Y"

SPECIAL NOTES :-
 Trusses to be detailed as shown on Standard Sheet B-2-222 except as shown hereon
 All Handrail Connection (except for Top Rail at U₁) to be riveted to handrail in shop. holes in truss members to be drilled in field

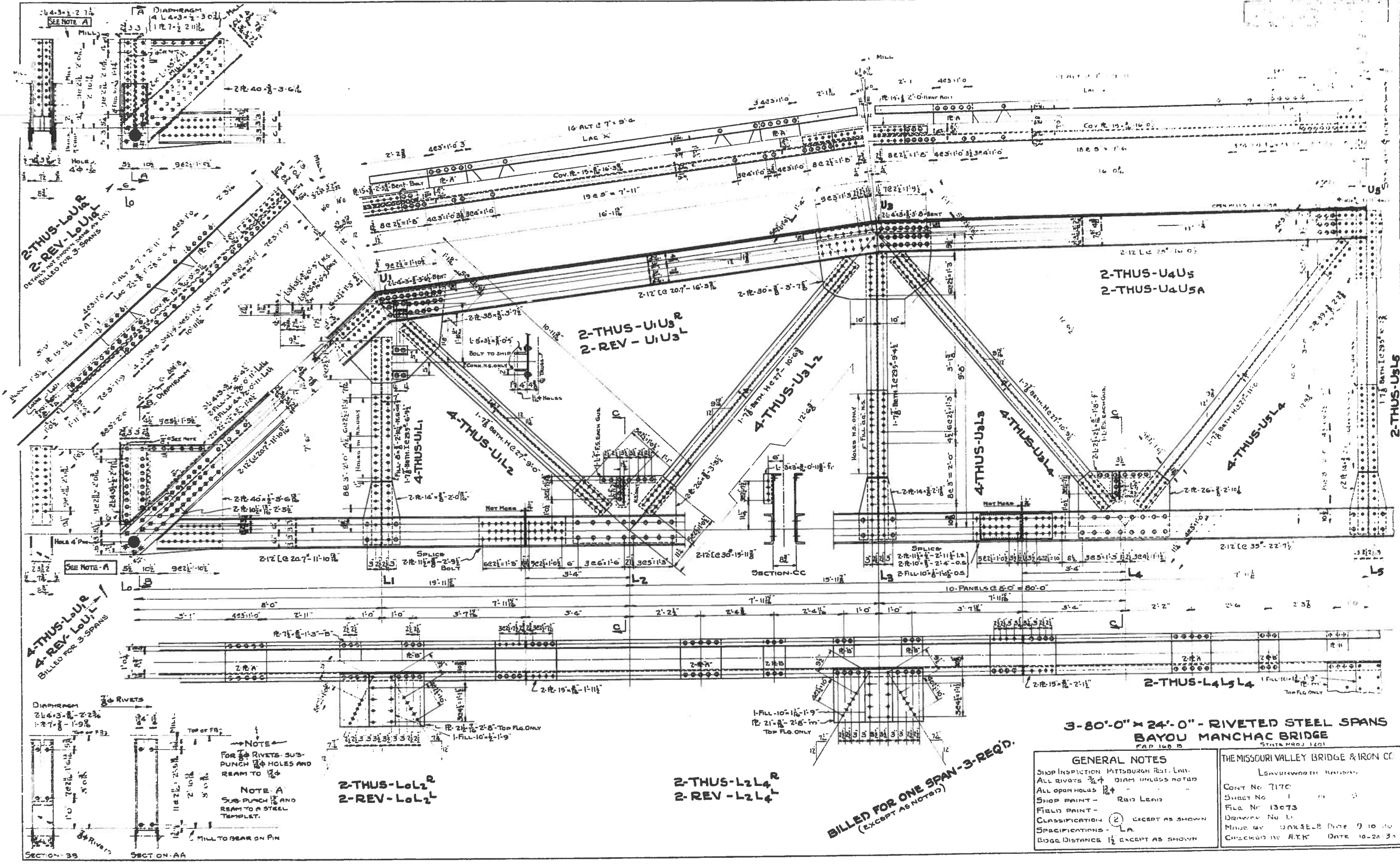
Work this sheet with Sheet B-2-222

SPECIAL DETAILS
 BAYOU MANCHAC BRIDGE
 BATON ROUGE - NEW ORLEANS HIGHWAY
 EAST BATON ROUGE & ASCENSION PARISHES
LOUISIANA HIGHWAY COMMISSION
 BATON ROUGE, LA.

Scales: As Noted November 1929



05214
11



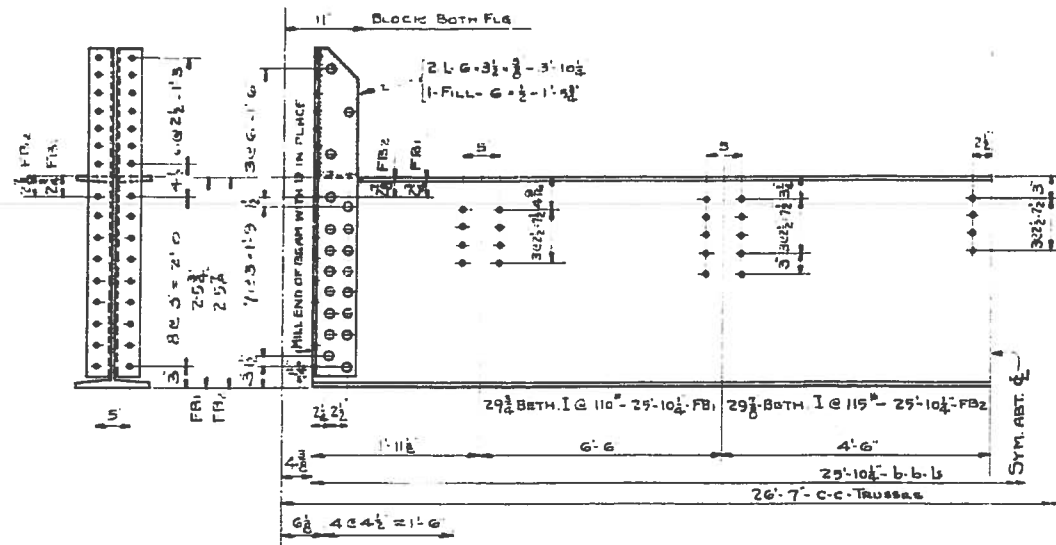
3-80'-0" x 24'-0" - RIVETED STEEL SPANS
BAYOU MANCHAC BRIDGE
 MAP 100 B
 STATE PROJ 1201

GENERAL NOTES
 SHOP INSPECTION - PITTSBURGH TEST. LAB.
 ALL RIVETS 3/4" DIAM UNLESS NOTED
 ALL OPEN HOLES 1/2"
 SHOP PAINT - RUST LEAD
 FIELD PAINT -
 CLASSIFICATION (2) EXCEPT AS SHOWN
 SPECIFICATIONS - L.A.
 BRIDGE DISTANCE 1/2 EXCEPT AS SHOWN

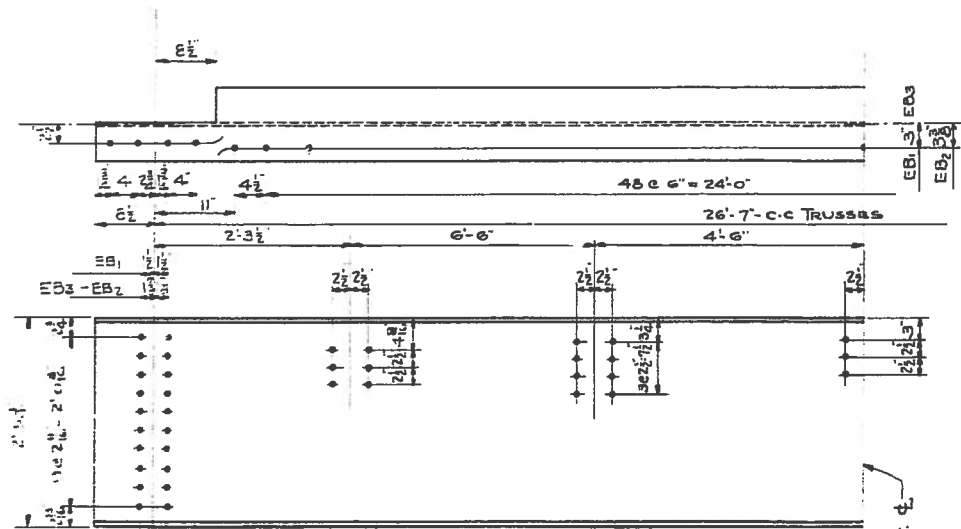
THE MISSOURI VALLEY BRIDGE & IRON CO.
 LEAVENWORTH, MISSOURI
 CONT No 7170
 SHEET No 1
 FILE No 13073
 DRAWING No 11
 MADE BY UNKLEB DATE 9 10 10
 CHECKED BY A.T.K. DATE 10-20-31

BILLED FOR ONE SPAN-3-REQ'D.
 (EXCEPT AS NOTED)

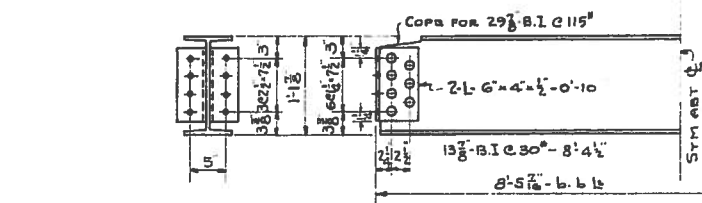
12



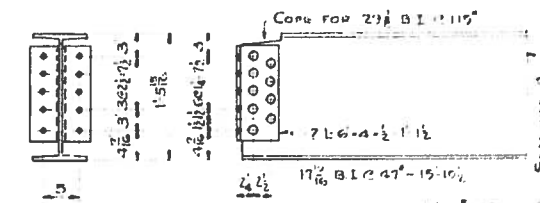
2-THUS - FB1
3-THUS - FB2



2-THUS - EB3
2-THUS - EB1
2-THUS - EB2
BILLED FOR 3 SPANS

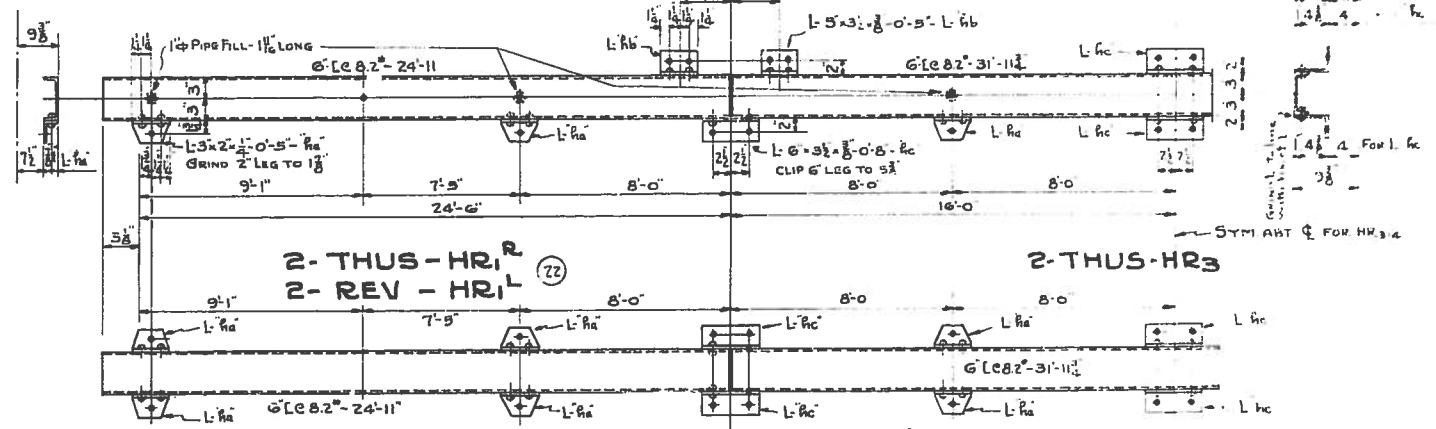


4-THUS - S2 (16)



4-THUS - S3
2-THUS - S5
4-THUS - S6
2-THUS - S8

4-THUS - S4
4-THUS - S7



2-THUS - HR1^R
2-REV - HR1^L (22)

2-THUS - HR3

4-THUS - HR2 (22)

2-THUS - HR4 (22)

3-80'-0" x 24'-0" - RIVETED STEEL SPANS
BAYOU MANCHAC BRIDGE
STATE PROJ. 1201

GENERAL NOTES

- SHOP INSPECTION - PITTSBURGH TEST. LAB
- ALL RIVETS 3/4" UNLESS NOTED
- ALL OPEN HOLES 1/2"
- SHOP PAINT - RED LEAD
- FIELD PAINT -
- CLASSIFICATION (2) EXCEPT AS SHOWN
- SPECIFICATIONS - LA
- EDGE DISTANCE 1/2" EXCEPT AS SHOWN

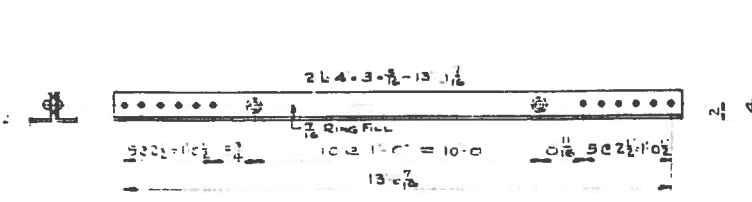
THE MISSOURI VALLEY BRIDGE & IRON CO

LEAVENWORTH, KANSAS
 CONT. No. 7116
 SHEET No. 5
 FILE No. 13074
 DRAWER No. 17
 MADE BY L. S. GUNN DATE 8-10-30
 CHECKED BY H. T. K. DATE 10-23-30

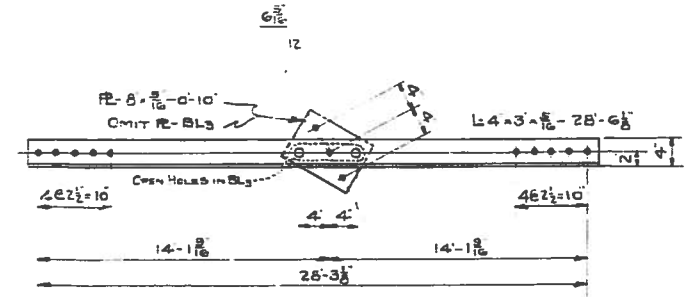
BILLED FOR ONE SPAN-3-REQ'D.
EXCEPT AS NOTED

0-5-21-80

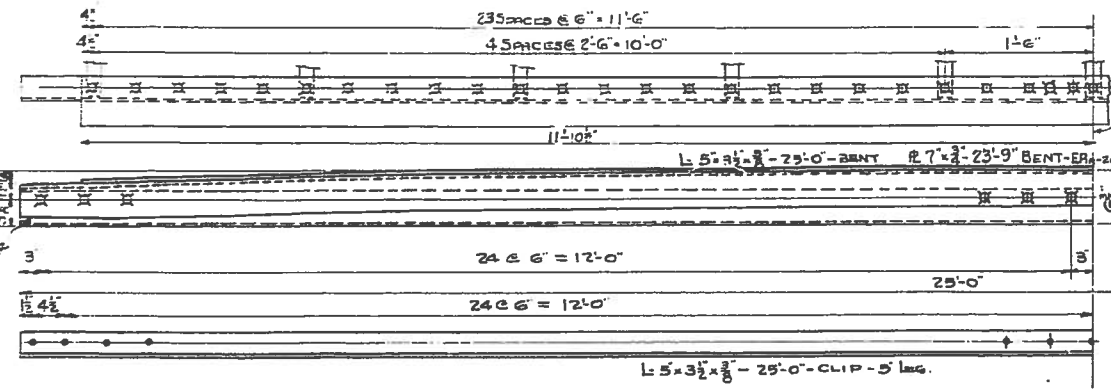
13



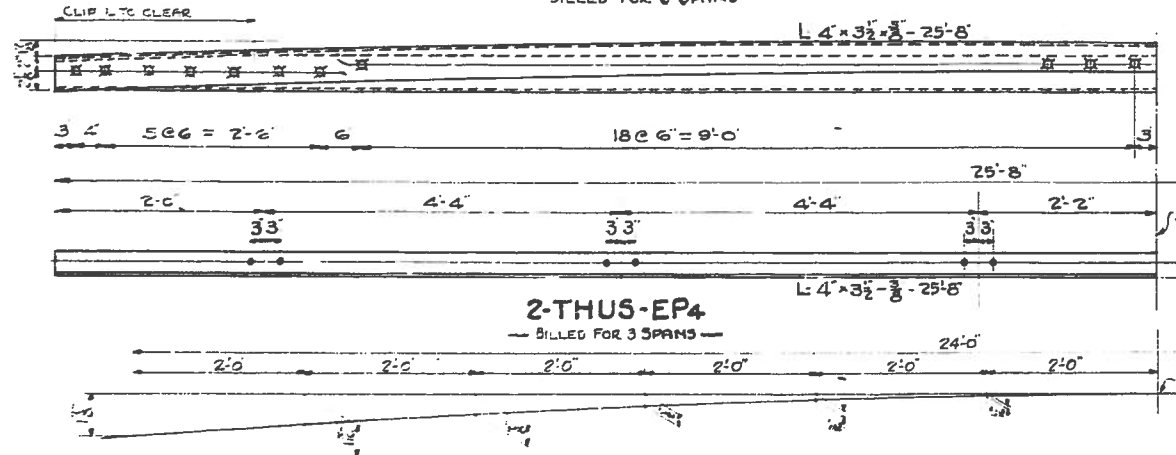
4-THUS-BL1



4-THUS-BL2 4-THUS-BL3

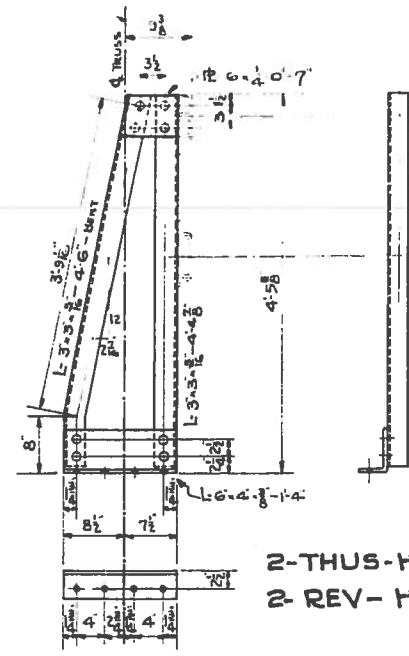


ONE-THUS-EP1 ONE-THUS-EP2 2-THUS-EP3
ONE-THUS-EP1A ONE-THUS-EP2A
- BILLED FOR 3 SPANS -

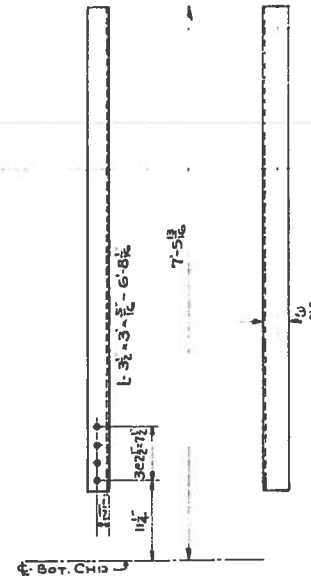


2-THUS-EP4
- BILLED FOR 3 SPANS -

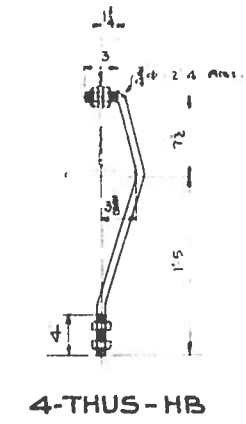
BENDING ORDINATES FOR EP1 TO EP4 INCL.



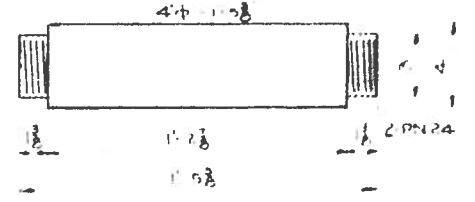
2-THUS-HP1
2-REV-HP1



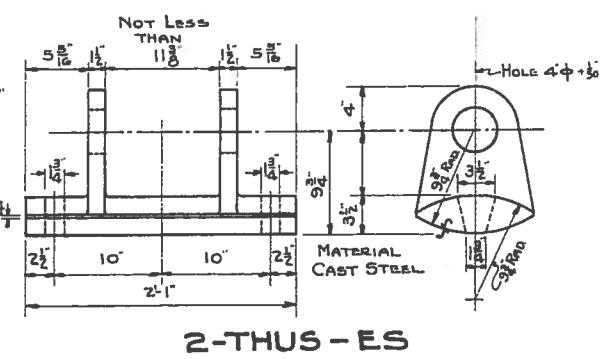
4-THUS-HP2
4-REV-HP2



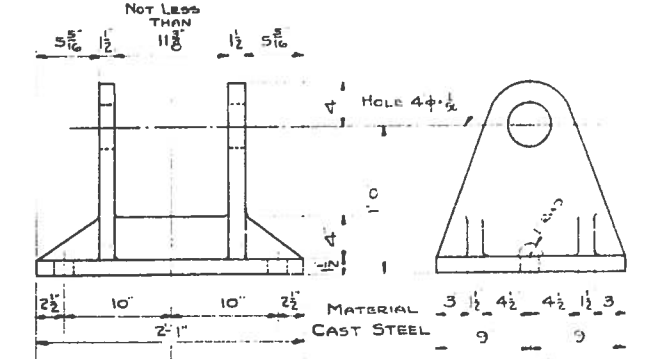
4-THUS-HB



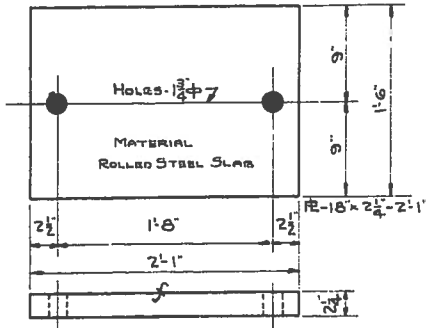
4-THUS-P1



2-THUS-ES



2-THUS-FS



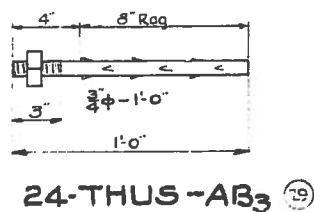
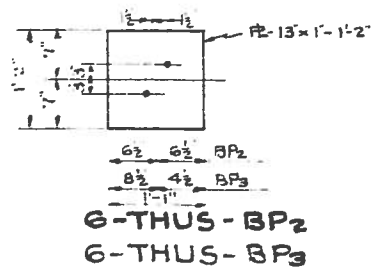
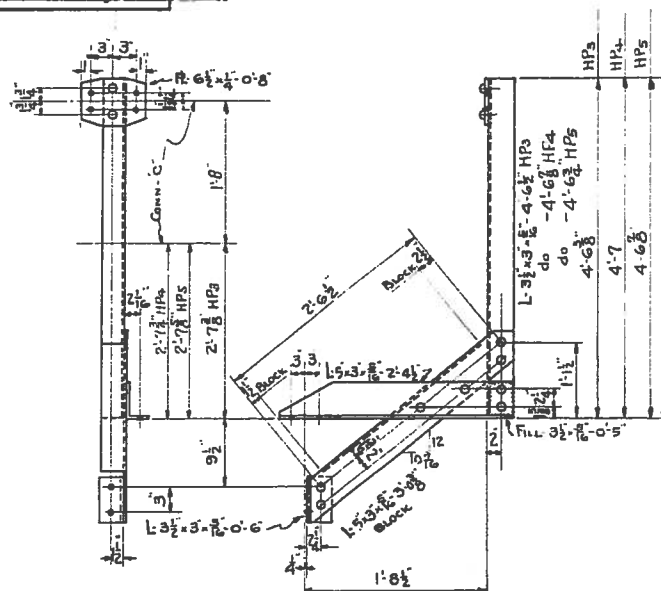
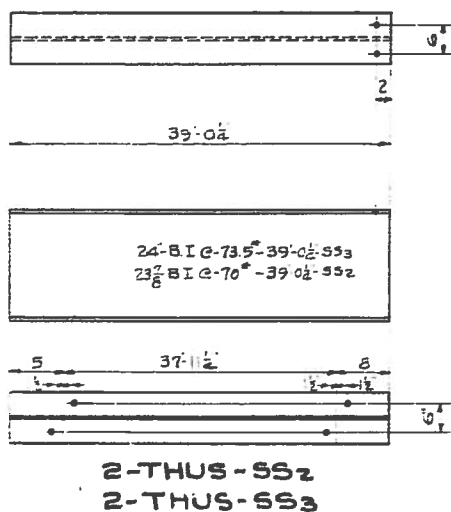
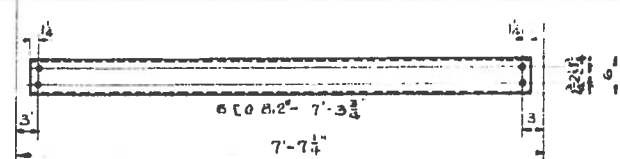
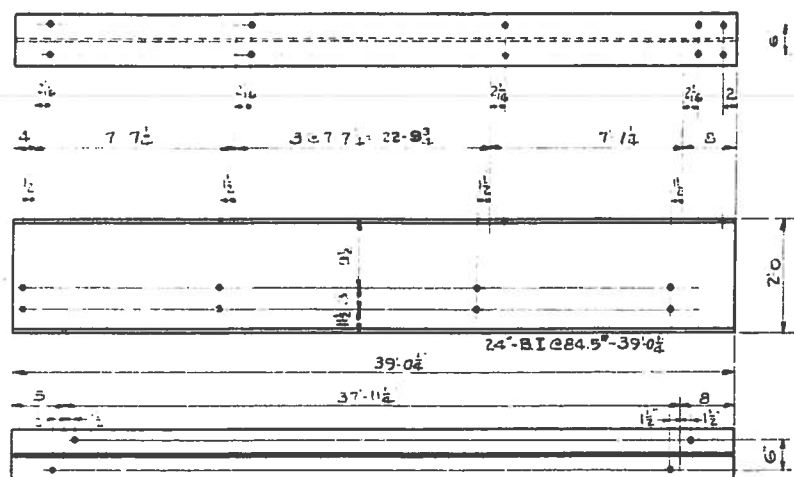
2-THUS-BP1

3-80'-0" x 24'-0" - RIVETED STEEL SPANS
BAYOU MANCHAC BRIDGE

BILLED FOR ONE SPAN - 3-REQ'D.
EXCEPT AS NOTED.

GENERAL NOTES		THE MISSOURI VALLEY BRIDGE & IRON CO.	
SHOP INSPECTION - PITTSBURGH TEST LAB.	ALL RIVETS 3/4" DIAM UNLESS NOTED	CONT. NO. 1170	LEAD ENGINEER: [Name]
ALL OPEN HOLES 1 1/2" DIA		SHEET NO. 3	
SHOP PAINT - RED LEAD		FILE NO. 13075	
FIELD PAINT - [Color]		DRAWER NO. 10	
CLASSIFICATION - [Type]	EXCEPT AS SHOWN	MADE BY: [Name]	DATE: [Date]
SPECIFICATIONS - [Type]		CHECKED BY: [Name]	DATE: [Date]
EDGE DISTANCE 1/2" EXCEPT AS SHOWN			

052140
14

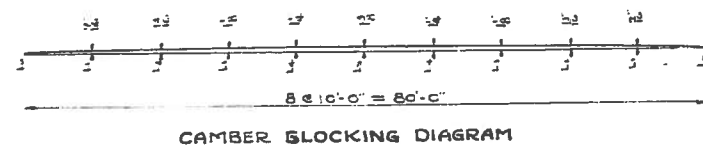
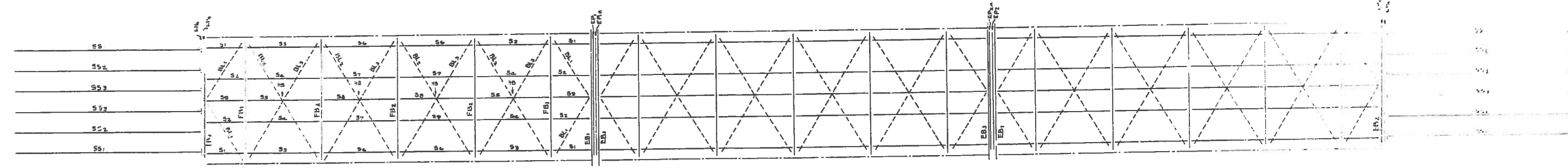
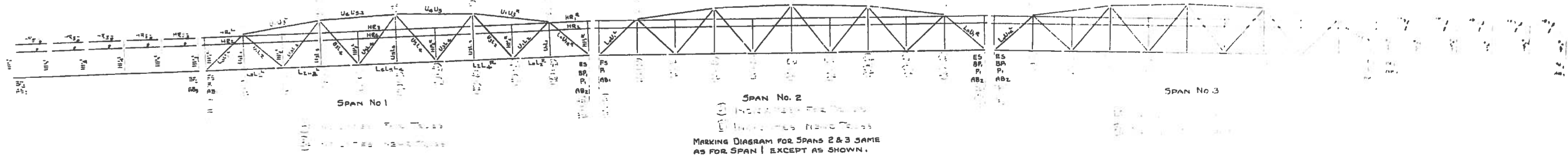


2-40'-0" x 24'-0" - I-BEAM SPANS.
WITH
3-80'-0" x 24'-0" - RIVETED STEEL SPANS
BAYOU MANCHAC BRIDGE
STATE PROJ. 1701

BILLED FOR ONE SPAN - 2-REQ'D

GENERAL NOTES		THE MISSOURI VALLEY BRIDGE & IRON CO	
SHOP INSPECTION - PITTSBURGH TEST LAB	ALL RIVETS 3/4" DIAM. UNLESS NOTED	LEAVENWORTH, KANSAS	
ALL OPEN HOLES 1 1/4"	SHOP PAINT - RED LEAD	CONT. No 7176	
FIELD PAINT -	CLASSIFICATION - LA EXCEPT AS SHOWN	SHEET No 4	
SPECIFICATIONS - LA	EDGE DISTANCE 1 1/2" EXCEPT AS SHOWN	FILE No 14076	
		DRAWN BY D	
		MADE BY DAK	DATE 2-11-30
		CHECKED BY JEN	DATE 10-27-30

052140
15



MARKING DIAGRAM
FOR
2-40'-0" x 24'-0" - I-BEAM SPANS
WITH
3-80'-0" x 24'-0" - RIVETED STEEL SPANS
BAYOU MANCHAC BRIDGE
FAP 168-B STATE PROJ 1201

THE MISSOURI VALLEY BRIDGE S-IRON CO
LEAVENWORTH, KANSAS
CONT No. 7170
SHEET No. 5 OF 5
FILE No. 13077
DRAWER No. D
MADE BY DAK DATE 2-10-33
CHECKED BY ZTA DATE 10-23-34